

BUCKET-HANDLE TEAR OF KNEE MENISCUS: KNOW IT TO REPAIR IT

Taoufik. AFRICHA, Mohamed OUAHIDI, Tarik ZIADI and Brahim ZINOUN

Service de Traumatologie, Hospital Militaire Moulay Ismail, Meknes, Morocco

ARTICLE INFO

Article History:

Received 4th April, 2019

Received in revised form 25th May, 2019

Accepted 23rd June, 2019

Published online 28th July, 2019

ABSTRACT

Bucket-handle meniscal tears are meniscus lesions with an attached tear fragment displaced. Magnetic resonance imaging (MRI) is considered as one of the best imaging techniques in diagnosing bucket-handle tears, with high degrees of both sensitivity and specificity. We report a case of a bucket-handle tear presenting as a double longitudinal tear of the medial meniscus and we describe the other possible signs in MRI to help traumatologists better understand the lesion to be better treated.

Key words:

bucket-handle tear, meniscus, MRI

Copyright©2019 Taoufik. AFRICHA et al. This is an open access article distributed under the Creative Commons Attribution License, which permits unrestricted use, distribution, and reproduction in any medium, provided the original work is properly cited.

INTRODUCTION

Bucket-handle meniscal tear, one of the unstable meniscal lesions, is defined as lesion parallel to the axial edge of the meniscus and sitting in the middle of the meniscus. It is preferential for the medial meniscus.

Magnetic resonance imaging (MRI) is considered as one of the best imaging techniques in diagnosing bucket-handle tears, with high degrees of both sensitivity and specificity, using a number of specific signs Well-known and widely used.their knowledge is important to the traumatologists in order to treat the lesion and prevent its arthrogenic evolution.

Case Report

A 32-year-old patient, without history, presents at a distance from indeterminate knee trauma, persistent pain and bending crunch with two bending blocking episodes.

MRI performed showed an aspect of double posterior cruciate ligament (PCL) (fig 1) and disappearance of the normal aspect of the posterior horn of the internal meniscus (fig 2).

DISCUSSION

Bucket-handle meniscal tear, one of the unstable meniscal lesions, is defined as a lesion parallel to the axial edge of the meniscus and sitting in the middle of the meniscus. It is preferentially involved in the medial meniscus. Its spontaneous repair is impossible with a high potential for arthritis. where its detection is a real diagnostic issue. (1) two forms are described in arthroscopy: a strip of tissue with possible dislocation in the intercondylar indentation or a permanently dislocated strip.(2)

***Corresponding author: Taoufik. AFRICHA**

Service de Traumatologie, Hospital Militaire Moulay Ismail, Meknes, Morocco



Figure 1 aspect of double posterior cruciate ligament

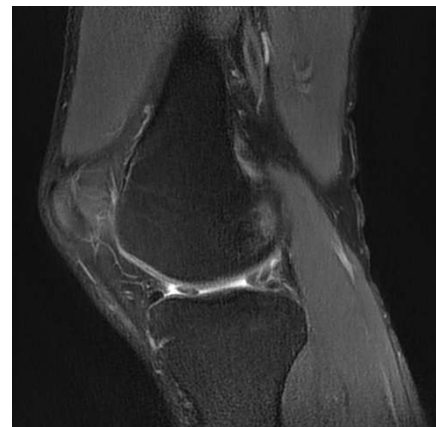


Fig 2 disappearance of the normal aspect of the posterior horn of the internal meniscus

MRI allows the positive diagnosis of Bucket-handle meniscal tear with sensitivity from 64% to 93% (3,4), which is lower than sensitivity of other meniscal lesions. (3,4)

The MRI interpretation looks for several signs according to the section plans studied

- double posterior cruciate ligament (PCL) sign: on sagittal section who has a specificity close to 100%. (5)
- fragment within the intercondylar notch sign: image in continuity of the posterior to anterior horn on the coronal sections corresponding to a fragment in the intercondylar notch. (6)
- double anterior horn sign : juxtaposition of the anterior segment and the displaced meniscal fragment visualized in sagittal section. (7)
- the sign of the snake: visualization of a band in sagittal section going from the posterior horn to the anterior horn, but not placing under the LCP.
- the absence of the "bow tie sign": disappearance on the sagittal cuts of the normal aspect of the meniscus like a black bow tie (8)
- disproportional thickening of the posterior horn: appears on the sagittal section, meniscus is thicker in its central part than in its peripheral part testifying to a fragmentary meniscal displacement [4].

MRI poses the positive diagnosis, assess the possibility of repair by evaluating the longitudinal lesion extension and its topography and evaluated quality of the strip tissue. (9)

CONCLUSION

Bucket-handle meniscal tear is an unstable lesion whose repair is imperative, his detection is mainly based on MRI despite a relatively low sensitivity whence is necessary to know the various signs to guide the management.

References

1. Trillat A. Traumatic lesions of the internal meniscus of the knee. Anatomical classification and clinical diagnosis. *Rev Chir Orthop Reparatrice Appar Mot* 1962;4 8:551-60.
2. Watt AJ, Halliday T, Raby N. The value of the absent bow tie sign in MRI of bucket-handle tears. *Clin Radiol* 2000; 55:622-6.
3. Wright DH, De Smet AA, Norris M. Bucket-handle tears of the medial and lateral menisci of the knee: value of MR imaging in detecting displaced fragments. *AJR Am J Roentgenol* 1995; 165:621-5.
4. Dorsay TA, Helms CA. Bucket-handle meniscal tears of the knee: sensitivity and specificity of MRI signs. *Skeletal Radiol* 2003; 32:266-72.
5. Magee TH, Hinson GW. MRI of meniscal bucket-handle tears. *Skeletal Radiol* 1998; 27:495-9.
6. Aydingoz U, Firat AK, Atay OA, *et al.* MR imaging of meniscal bucket-handle tears: a review of signs and their relation to arthroscopic classification. *Eur Radiol* 2003; 13:618-25.
7. Haramati N, Staron RB, Rubin S, *et al.* The flipped meniscus sign. *Skeletal Radiol* 1993; 22:273-7.
8. Helms CA, Laorr A, Cannon WD. The absent bow tie sign in bucket-handle tears of the menisci in the knee. *AJR Am J Roentgenol* 1998; 170:57-61.
9. Thoreux P, Rety F, Nourissat G, *et al.* Pre-operative diagnosis of bucket-handle meniscal tears: clinical evaluation and value of arthroscan and MRI radiological criteria. *Rev Chir Orthop Reparatrice Appar Mot* 2005; 91:649-57.

How to cite this article:

Taoufik. AFRICHA *et al* (2019) 'Bucket-Handle Tear of Knee Meniscus: Know it to Repair it', *International Journal of Current Advanced Research*, 08(07), pp. 19368-19369. DOI: <http://dx.doi.org/10.24327/ijcar.2019.19369.3733>
